

St.Tropez-830-3



Light Output Ratio:	100.0%	
Luminaire Power:	5.895 W	
SHR Nominal:	0.00	Calculated using the TM5
SHR Maximum:	1.00	fine grid method.

C Range: 0 - 360DEG  
C Interval: 15.0DEG  
Test Speed: HIGH  
Temperature: 25.3DEG  
Operators: Jason  
Test Date: 2020-06-09

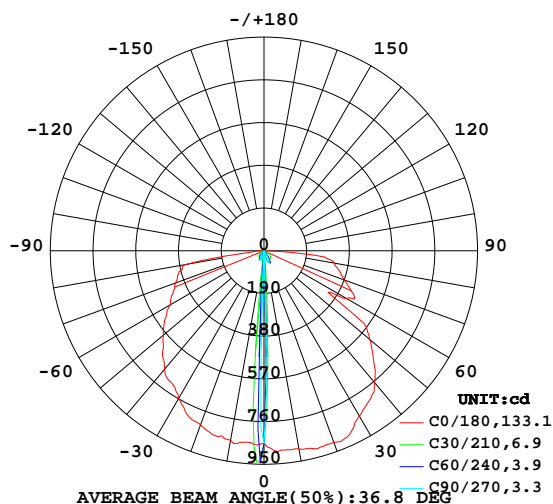
γ Range: 0 - 90DEG  
γ Interval: 1.0DEG  
Test System: EVERFINE GO-2000B\_V1 SYSTEM V2.0.362  
Humidity: 58%  
Test Distance: 5.850m [K=1.0000]  
Remarks:

LUMINAIRE PHOTOMETRIC TEST REPORT

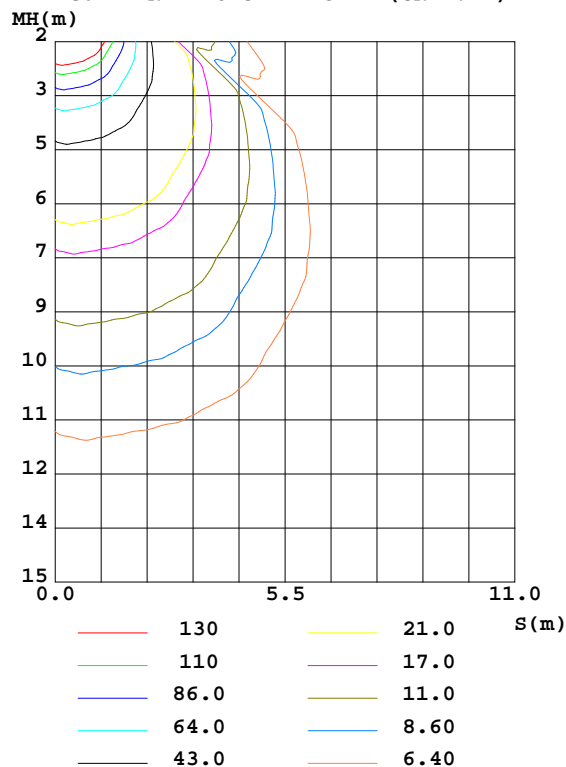
Test:U:220.9V I:0.0516A P:5.895W PF:0.5172 Freq:60.07Hz Lamp Flux:338.785x1 lm		
NAME: St.Tropez-830-3	TYPE:Linear Light	SERIAL No.:
SPEC.:3000K	DIM.: L140mm*W95mm*H62mm	
MFR.: NEKO LIGHTING AG		

DATA OF LAMP		PHOTOMETRIC DATA				Eff: 57.47 lm/W
MODEL	CREE-3000K	I <sub>max</sub> (cd)	944.2	S/MH(C0/180)	1.30	
NOMINAL POWER(W)	6	LOR(%)	100.0	S/MH(C90/270)	0.07	
RATED VOLTAGE(V)	220	TOTAL FLUX(lm)	338.78	η UP,DN(C0-180)	0.0,50.9	
NOMINAL FLUX(lm)	338.785	CIE CLASS	DIRECT	η UP,DN(C180-360)	0.0,49.1	
LAMPS INSIDE	1	η up(%)	0.0	CIBSE SHR NOM	0.00	
TEST VOLTAGE(V)	220	η down(%)	100.0	CIBSE SHR MAX	1.00	

LUMINOUS INTENSITY DISTRIBUTION DIAGRAM



C0 PLANE ISOLUX DIAGRAM (UNIT:lx)



C Range: 0 - 360DEG  
C Interval: 15.0DEG  
Test Speed: HIGH  
Temperature:25.3DEG  
Operators:Jason  
Test Date:2020-06-09

γ Range: 0 - 90DEG  
γ Interval: 1.0DEG  
Test System:EVERFINE GO-2000B\_V1 SYSTEM V2.0.362  
Humidity:58%  
Test Distance:5.850m [K=1.0000]  
Remarks:

## ZONAL FLUX DIAGRAM

### ZONAL FLUX DIAGRAM:

γ	C0	C45	C90	C135	C180	C225	C270	C315	γ	Φ zone	Φ total	%lum, lamp
10	894.6	9.348	6.074	9.136	855.6	10.32	5.704	9.422	0- 10	20.27	20.27	5.98,5.98
20	906.7	27.75	51.32	23.68	824.4	15.12	44.12	21.74	10- 20	26.20	46.47	13.7,13.7
30	848.1	51.86	32.05	45.53	758.9	40.85	31.90	42.56	20- 30	45.67	92.14	27.2,27.2
40	762.8	44.20	12.63	37.18	687.5	32.26	9.979	33.85	30- 40	54.91	147.1	43.4,43.4
50	614.8	22.90	1.973	17.89	583.9	18.94	1.161	17.12	40- 50	53.90	200.9	59.3,59.3
60	424.7	10.26	0.8544	7.313	482.3	6.344	0.3852	6.139	50- 60	45.79	246.7	72.8,72.8
70	381.2	3.022	0.5067	1.873	417.6	1.267	0.1078	1.231	60- 70	41.69	288.4	85.1,85.1
80	317.9	1.011	0.2142	0.8023	356.7	0.6193	0.0148	0.5110	70- 80	35.82	324.3	95.7,95.7
90	10.34	0.3547	0.0826	0.3048	0.9410	0.2575	0.0148	0.2459	80- 90	14.53	338.8	100,100
100									90-100			
110									100-110			
120									110-120			
130									120-130			
140									130-140			
150									140-150			
160									150-160			
170									160-170			
180									170-180			
DEG	LUMINOUS INTENSITY:cd									UNIT:lm		

Conical surface Flux(90deg): 174.66 lm

%lum = 51.6%

%lamp = 51.6%

Conical surface Flux(120deg): 246.73 lm

%lum = 72.8%

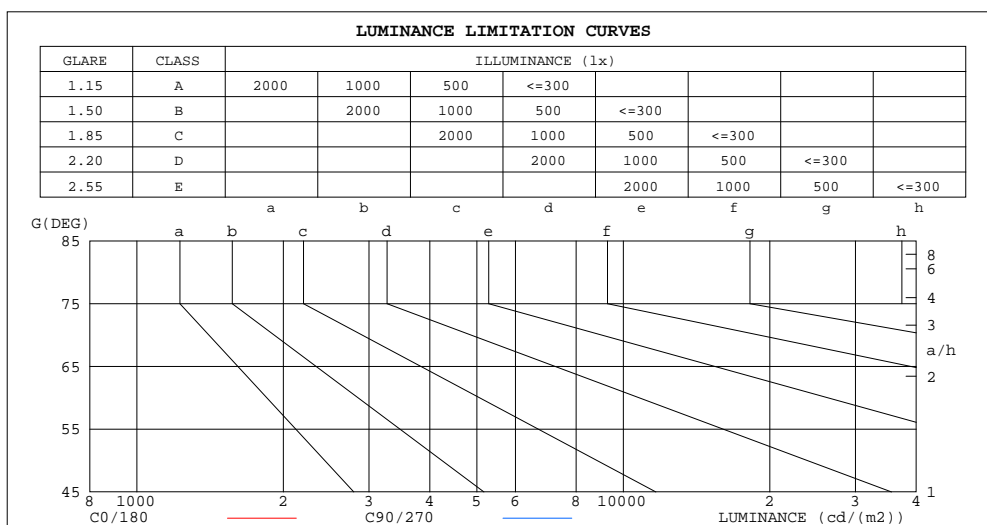
%lamp = 72.8%

C Range: 0 - 360DEG  
C Interval: 15.0DEG  
Test Speed: HIGH  
Temperature:25.3DEG  
Operators:Jason  
Test Date:2020-06-09

γ Range: 0 - 90DEG  
γ Interval: 1.0DEG  
Test System:EVERFINE GO-2000B\_V1 SYSTEM V2.0.362  
Humidity:58%  
Test Distance:5.850m [K=1.0000]  
Remarks:

**LUMINANCE LIMITATION CURVES**

Test:U:220.9V I:0.0516A P:5.895W PF:0.5172 Freq:60.07Hz Lamp Flux:338.785x1 lm		
NAME: St.Tropez-830-3	TYPE:Linear Light	SERIAL No.:
SPEC.:3000K	DIM.: L140mm*W95mm*H62mm	
MFR.: NEKO LIGHTING AG		



LUMINANCE cd/(m2)		
G(DEG)	C0/180	C90/270
85	186764	130
80	133039	96
75	97787	113
70	81010	115
65	74050	120
60	61733	133
55	58590	168
50	69518	238
45	70837	455

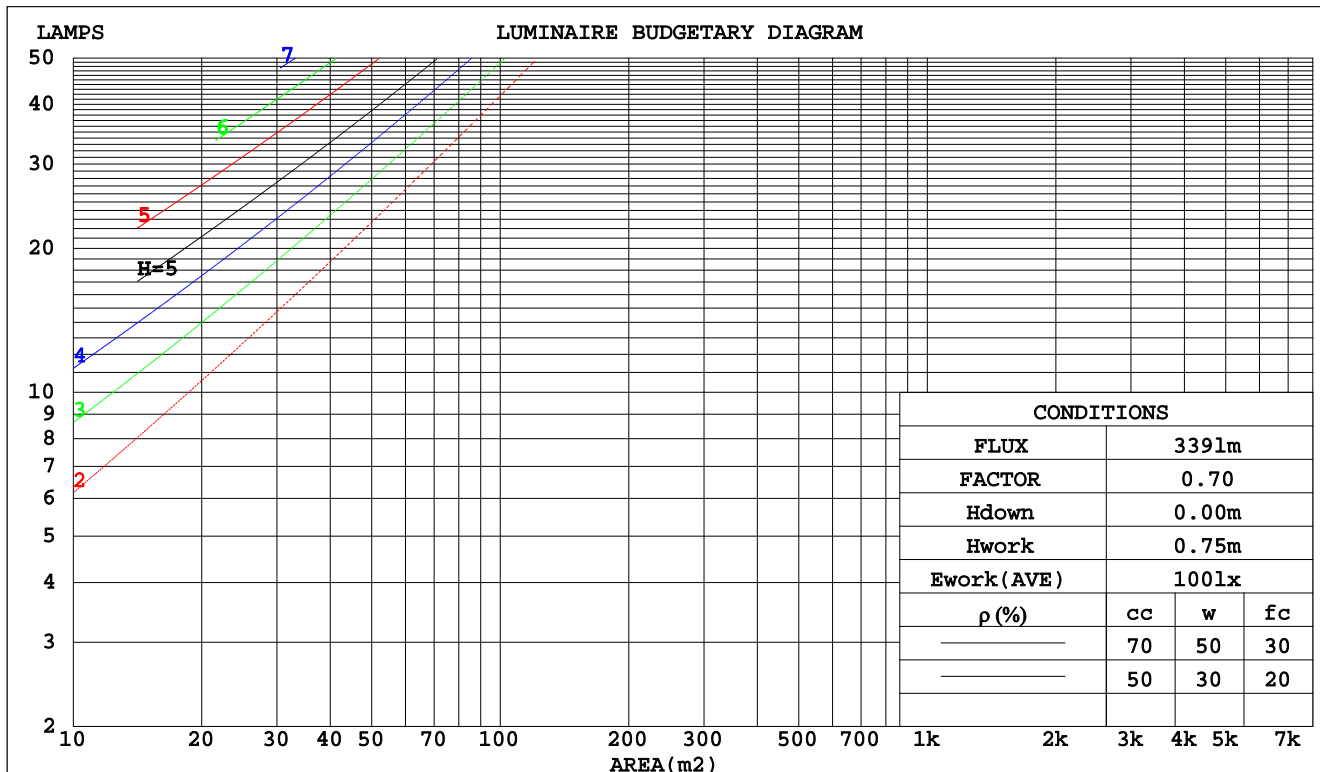
C Range: 0 - 360DEG  
C Interval: 15.0DEG  
Test Speed: HIGH  
Temperature:25.3DEG  
Operators:Jason  
Test Date:2020-06-09

γ Range: 0 - 90DEG  
γ Interval: 1.0DEG  
Test System:EVERFINE GO-2000B\_V1 SYSTEM V2.0.362  
Humidity:58%  
Test Distance:5.850m [K=1.0000]  
Remarks:

CU AND LUMINAIRE BUDGETARY ESTIMATE DIAGRAM

Test:U:220.9V I:0.0516A P:5.895W PF:0.5172 Freq:60.07Hz Lamp Flux:338.785x1 lm		
NAME: St.Tropez-830-3	TYPE:Linear Light	SERIAL No.:
SPEC.:3000K	DIM.: L140mm*W95mm*H62mm	
MFR.: NEKO LIGHTING AG		

pcc	80%			70%			50%			30%			10%			0
pw	50%	30%	10%	50%	30%	10%	50%	30%	10%	50%	30%	10%	50%	30%	10%	0
pfc	20%			20%			20%			20%			20%			0
RCR	Coefficients of Utilization(CU)															
0.0	1.19	1.19	1.19	1.16	1.16	1.16	1.11	1.11	1.11	1.06	1.06	1.06	1.02	1.02	1.02	1.00
1.0	1.02	.97	.93	.90	.95	.91	.95	.92	.88	.91	.88	.86	.88	.85	.83	.81
2.0	.88	.81	.75	.86	.79	.74	.83	.77	.72	.79	.74	.70	.76	.72	.69	.66
3.0	.77	.69	.62	.76	.68	.61	.73	.66	.60	.70	.64	.59	.67	.62	.58	.56
4.0	.69	.59	.53	.67	.59	.52	.65	.57	.51	.62	.56	.51	.60	.55	.50	.48
5.0	.62	.52	.45	.60	.52	.45	.58	.51	.45	.56	.49	.44	.54	.48	.44	.42
6.0	.56	.47	.40	.55	.46	.40	.53	.45	.39	.51	.44	.39	.50	.43	.39	.37
7.0	.51	.42	.36	.50	.41	.35	.48	.41	.35	.47	.40	.35	.45	.39	.35	.33
8.0	.46	.38	.32	.46	.38	.32	.44	.37	.32	.43	.36	.32	.42	.36	.31	.29
9.0	.43	.35	.29	.42	.34	.29	.41	.34	.29	.40	.33	.29	.39	.33	.29	.27
10.0	.40	.32	.27	.39	.32	.27	.38	.31	.26	.37	.31	.26	.36	.30	.26	.24



C Range: 0 - 360DEG  
C Interval: 15.0DEG  
Test Speed: HIGH  
Temperature:25.3DEG  
Operators:Jason  
Test Date:2020-06-09

γ Range: 0 - 90DEG  
γ Interval: 1.0DEG  
Test System:EVERFINE GO-2000B\_V1 SYSTEM V2.0.362  
Humidity:58%  
Test Distance:5.850m [K=1.0000]  
Remarks:

WEC AND CCEC

Test:U:220.9V I:0.0516A P:5.895W PF:0.5172 Freq:60.07Hz Lamp Flux:338.785x1 lm		
NAME: St.Tropez-830-3	TYPE:Linear Light	SERIAL No.:
SPEC.:3000K	DIM.: L140mm*W95mm*H62mm	
MFR.: NEKO LIGHTING AG		

pcc	80%			70%			50%			30%			10%			0	
pw	50%	30%	10%	50%	30%	10%	50%	30%	10%	50%	30%	10%	50%	30%	10%	0	
pfc	20%			20%			20%			20%			20%			0	
RCR	RCR:Room Cavity Ratio						Wall Exitance Coefficients(WEC)										
0.0																	
1.0	.347	.198	.063	.340	.194	.062	.327	.187	.060	.314	.181	.058	.303	.176	.057		
2.0	.313	.172	.053	.307	.169	.052	.295	.164	.051	.284	.159	.050	.274	.155	.049		
3.0	.283	.151	.045	.277	.149	.045	.267	.145	.044	.257	.141	.043	.248	.137	.043		
4.0	.257	.134	.039	.252	.132	.039	.243	.129	.038	.234	.126	.038	.226	.123	.037		
5.0	.235	.120	.035	.231	.118	.035	.223	.116	.034	.215	.113	.034	.208	.111	.033		
6.0	.216	.108	.031	.212	.107	.031	.205	.105	.031	.198	.103	.030	.192	.101	.030		
7.0	.200	.099	.028	.197	.098	.028	.190	.096	.028	.184	.094	.027	.178	.093	.027		
8.0	.186	.091	.026	.183	.090	.025	.177	.089	.025	.172	.087	.025	.167	.086	.025		
9.0	.174	.084	.023	.171	.083	.023	.166	.082	.023	.161	.081	.023	.156	.079	.023		
10.0	.163	.078	.022	.161	.078	.022	.156	.076	.022	.152	.075	.021	.147	.074	.021		

pcc	80%			70%			50%			30%			10%			0	
ρw	50%	30%	10%	50%	30%	10%	50%	30%	10%	50%	30%	10%	50%	30%	10%	0	
ρfc	20%			20%			20%			20%			20%			0	
RCR	RCR:Room Cavity Ratio						Ceiling Cavity Exitance Coefficients(CCEC)										
0.0	.190	.190	.190	.163	.163	.163	.111	.111	.111	.064	.064	.064	.020	.020	.020		
1.0	.183	.156	.131	.156	.134	.113	.107	.092	.078	.062	.053	.045	.020	.017	.015		
2.0	.175	.132	.095	.150	.113	.082	.103	.078	.058	.059	.046	.034	.019	.015	.011		
3.0	.167	.114	.072	.143	.099	.063	.098	.069	.044	.057	.040	.026	.018	.013	.009		
4.0	.159	.101	.057	.136	.087	.050	.094	.061	.035	.054	.036	.021	.017	.012	.007		
5.0	.151	.091	.046	.130	.079	.040	.089	.055	.029	.052	.032	.017	.017	.011	.006		
6.0	.143	.082	.039	.123	.071	.034	.085	.050	.024	.049	.029	.014	.016	.010	.005		
7.0	.136	.075	.033	.117	.065	.029	.081	.046	.020	.047	.027	.012	.015	.009	.004		
8.0	.129	.070	.029	.111	.060	.025	.077	.042	.018	.045	.025	.011	.014	.008	.003		
9.0	.123	.065	.025	.106	.056	.022	.073	.039	.016	.043	.023	.009	.014	.008	.003		
10.0	.117	.060	.022	.101	.052	.020	.070	.037	.014	.041	.022	.008	.013	.007	.003		

C Range: 0 - 360DEG  
C Interval: 15.0DEG  
Test Speed: HIGH  
Temperature:25.3DEG  
Operators:Jason  
Test Date:2020-06-09

γ Range: 0 - 90DEG  
γ Interval: 1.0DEG  
Test System:EVERFINE GO-2000B\_V1 SYSTEM V2.0.362  
Humidity:58%  
Test Distance:5.850m [K=1.0000]  
Remarks:

UGR(Unified Glare Rating) Table

Test:U:220.9V I:0.0516A P:5.895W PF:0.5172 Freq:60.07Hz Lamp Flux:338.785x1 lm										
NAME: St.Tropez-830-3					TYPE:Linear Light			SERIAL No.:		
SPEC.:3000K					DIM.: L140mm*W95mm*H62mm					
MFR.: NEKO LIGHTING AG										
ceiling/cavity	0.7	0.7	0.5	0.5	0.3	0.7	0.7	0.5	0.5	0.3
walls	0.5	0.3	0.5	0.3	0.3	0.5	0.3	0.5	0.3	0.3
working plane	0.2	0.2	0.2	0.2	0.2	0.2	0.2	0.2	0.2	0.2
Room dimensions	Viewed crosswise					Viewed endwise				
x = 2H y = 2H	31.3	32.8	31.6	33.0	33.2	9.6	11.2	9.9	11.4	11.6
3H	35.0	36.4	35.3	36.6	36.9	9.5	10.9	9.8	11.1	11.4
4H	37.1	38.4	37.4	38.7	38.9	9.4	10.7	9.7	11.0	11.3
6H	39.6	40.9	39.9	41.2	41.4	9.3	10.6	9.6	10.9	11.1
8H	41.0	42.3	41.3	42.5	42.8	9.2	10.5	9.6	10.8	11.1
12H	42.4	43.7	42.8	44.0	44.3	9.2	10.4	9.5	10.7	11.0
4H 2H	31.0	32.3	31.3	32.6	32.8	11.8	13.2	12.2	13.5	13.7
3H	34.6	35.8	35.0	36.1	36.4	11.7	12.9	12.0	13.2	13.5
4H	36.7	37.9	37.1	38.2	38.5	11.6	12.7	12.0	13.0	13.4
6H	39.3	40.3	39.7	40.7	41.0	11.5	12.5	11.9	12.9	13.2
8H	40.8	41.8	41.3	42.2	42.5	11.5	12.4	11.9	12.8	13.2
12H	42.6	43.4	43.0	43.8	44.2	11.4	12.3	11.9	12.7	13.1
8H 4H	36.6	37.5	37.0	37.9	38.3	13.0	13.9	13.4	14.3	14.7
6H	39.2	40.0	39.6	40.4	40.8	12.9	13.7	13.3	14.1	14.5
8H	40.7	41.4	41.2	41.9	42.3	12.9	13.6	13.3	14.0	14.5
12H	42.5	43.1	43.0	43.5	44.0	12.8	13.5	13.3	13.9	14.4
12H 4H	36.5	37.4	37.0	37.8	38.2	13.5	14.4	13.9	14.7	15.2
6H	39.1	39.8	39.6	40.3	40.7	13.5	14.2	13.9	14.6	15.1
8H	40.7	41.3	41.2	41.8	42.2	13.5	14.1	13.9	14.5	15.0
Variations with the observer position at spacings:										
S = 1.0H	+ 1.3 / - 0.9					+ 1.2 / - 1.6				
1.5H	+ 2.4 / - 2.3					+ 1.3 / - 1.2				
2.0H	+ 3.2 / - 3.6					+ 1.8 / - 1.8				

CIE Pub.117, 338.8 lm Total Lamp Luminous Flux Correct ( $8\log(F/F_0) = -3.8$ )

C Range: 0 - 360DEG  
C Interval: 15.0DEG  
Test Speed: HIGH  
Temperature:25.3DEG  
Operators:Jason  
Test Date:2020-06-09

$\gamma$  Range: 0 - 90DEG  
 $\gamma$  Interval: 1.0DEG  
Test System:EVERFINE GO-2000B\_V1 SYSTEM V2.0.362  
Humidity:58%  
Test Distance:5.850m [K=1.0000]  
Remarks:

UTILIZATION FACTORS TABLE

Test:U:220.9V I:0.0516A P:5.895W PF:0.5172 Freq:60.07Hz Lamp Flux:338.785x1 lm		
NAME: St.Tropez-830-3	TYPE:Linear Light	SERIAL No.:
SPEC.:3000K	DIM.: L140mm*W95mm*H62mm	
MFR.: NEKO LIGHTING AG		

REFLECTANCE										
Ceiling	0.8	0.8	0.8	0.7	0.7	0.7	0.5	0.5	0.5	0
Walls	0.7	0.5	0.3	0.7	0.5	0.3	0.7	0.5	0.3	0
Working plane	0.2	0.2	0.2	0.2	0.2	0.2	0.2	0.2	0.2	0
ROOM INDEX	UTILIZATION FACTORS(PERCENT) $k(RI) \times RCR = 5$									
k = 0.60	57	46	39	57	46	39	56	45	39	32
0.80	67	55	48	66	55	47	64	54	47	40
1.00	75	63	56	73	62	55	71	64	55	47
1.25	81	70	63	80	70	62	77	68	62	54
1.50	86	76	68	84	75	68	81	73	67	59
2.00	93	84	77	91	82	76	87	80	74	66
2.50	97	89	82	95	87	81	91	84	79	71
3.00	100	93	87	98	91	86	94	88	84	75
4.00	105	98	93	102	97	92	98	93	89	80
5.00	107	102	97	105	100	96	100	96	93	83
ROOM INDEX	UF(total)									Direct
According to DIN EN 13032-2 2004			Suspended					SHRNOM = 1.25		

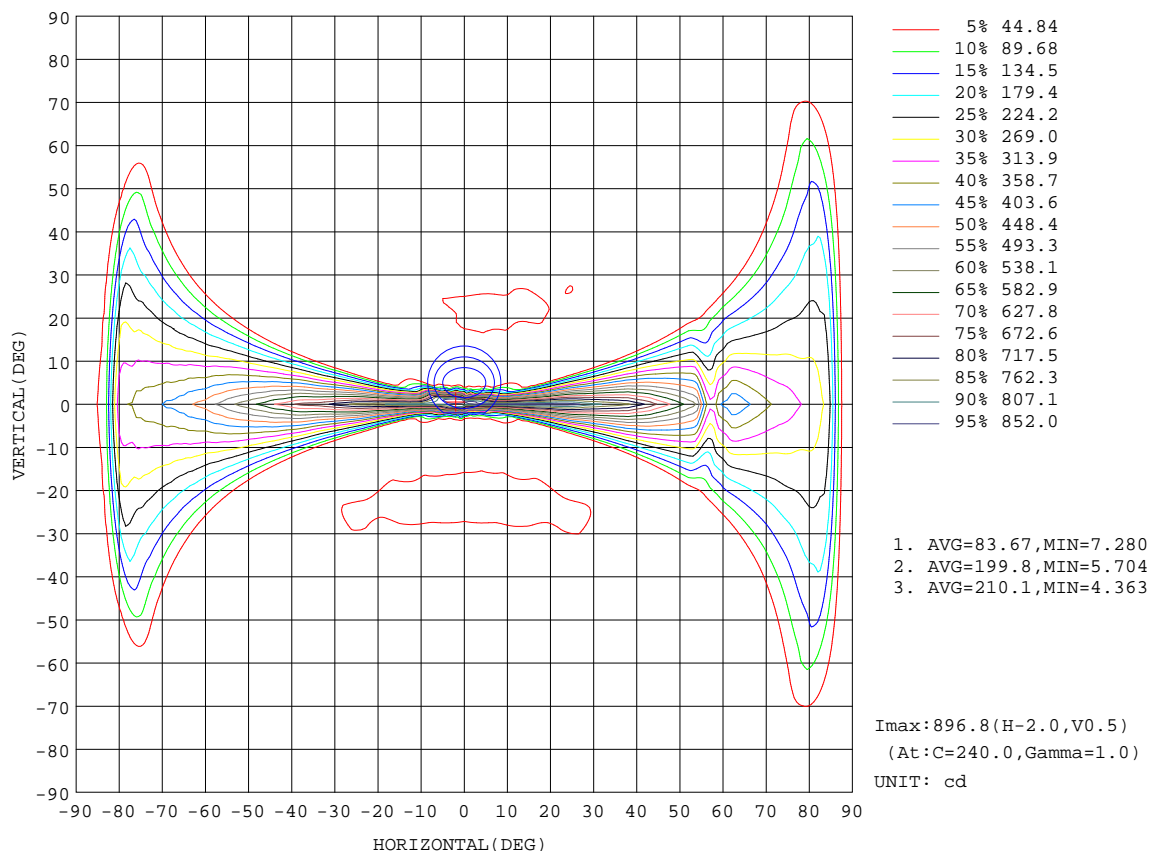
C Range: 0 - 360DEG  
 C Interval: 15.0DEG  
 Test Speed: HIGH  
 Temperature:25.3DEG  
 Operators:Jason  
 Test Date:2020-06-09

$\gamma$  Range: 0 - 90DEG  
 $\gamma$  Interval: 1.0DEG  
 $\gamma$  Test System:EVERFINE GO-2000B\_V1 SYSTEM V2.0.362  
 Humidity:58%  
 Test Distance:5.850m [K=1.0000]  
 Remarks:



# ISOCANDELA DIAGRAM

Test:U:220.9V I:0.0516A P:5.895W PF:0.5172 Freq:60.07Hz Lamp Flux:338.785x1 lm		
NAME: St.Tropez-830-3	TYPE:Linear Light	SERIAL No.:
SPEC.:3000K	DIM.: L140mm*W95mm*H62mm	
MFR.: NEKO LIGHTING AG		

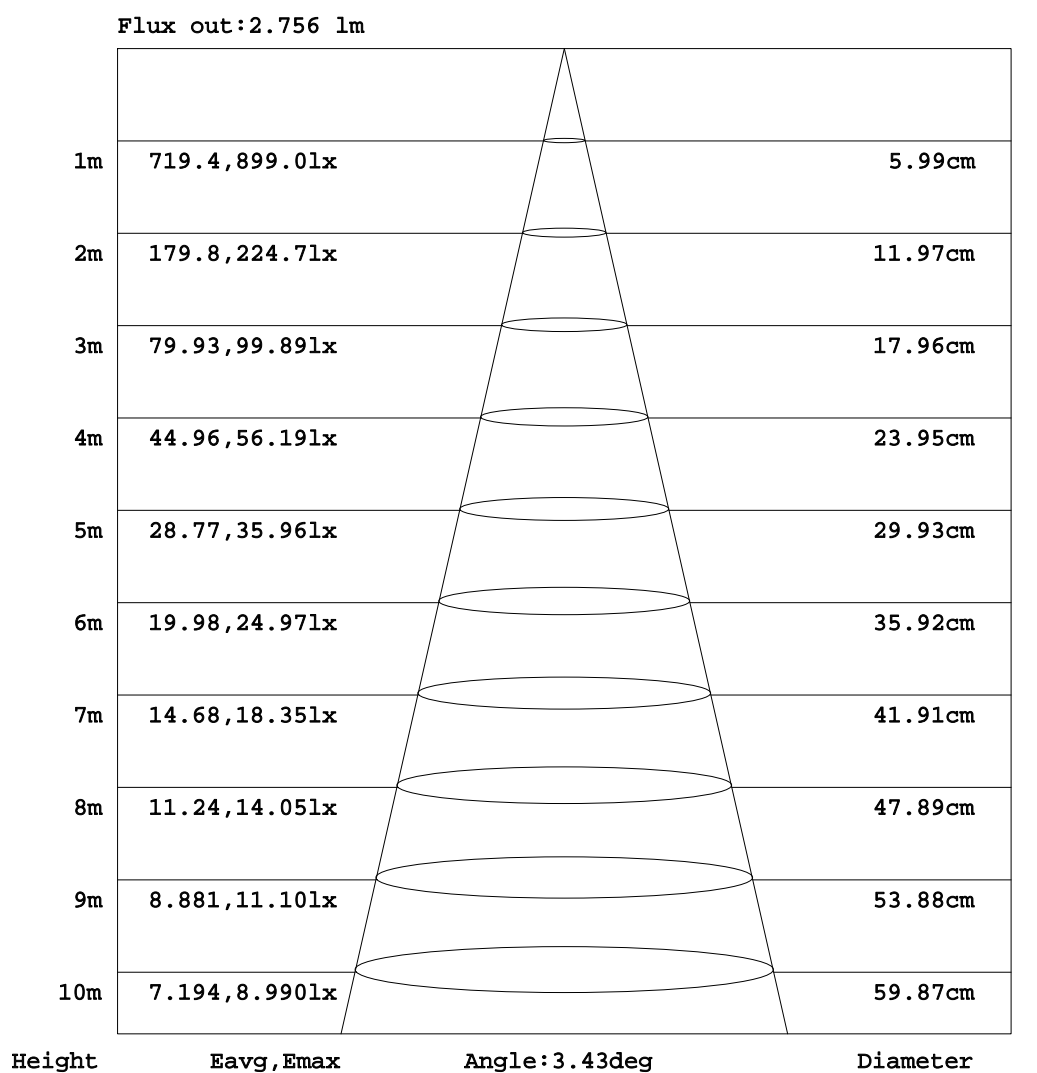


C Range: 0 - 360DEG  
C Interval: 15.0DEG  
Test Speed: HIGH  
Temperature:25.3DEG  
Operators:Jason  
Test Date:2020-06-09

γ Range: 0 - 90DEG  
γ Interval: 1.0DEG  
Test System:EVERFINE GO-2000B\_V1 SYSTEM V2.0.362  
Humidity:58%  
Test Distance:5.850m [K=1.0000]  
Remarks:

**AAI Figure**

Test:U:220.9V I:0.0516A P:5.895W PF:0.5172 Freq:60.07Hz Lamp Flux:338.785x1 lm		
NAME: St.Tropez-830-3	TYPE:Linear Light	SERIAL No.:
SPEC.:3000K	DIM.: L140mm*W95mm*H62mm	
MFR.: NEKO LIGHTING AG		



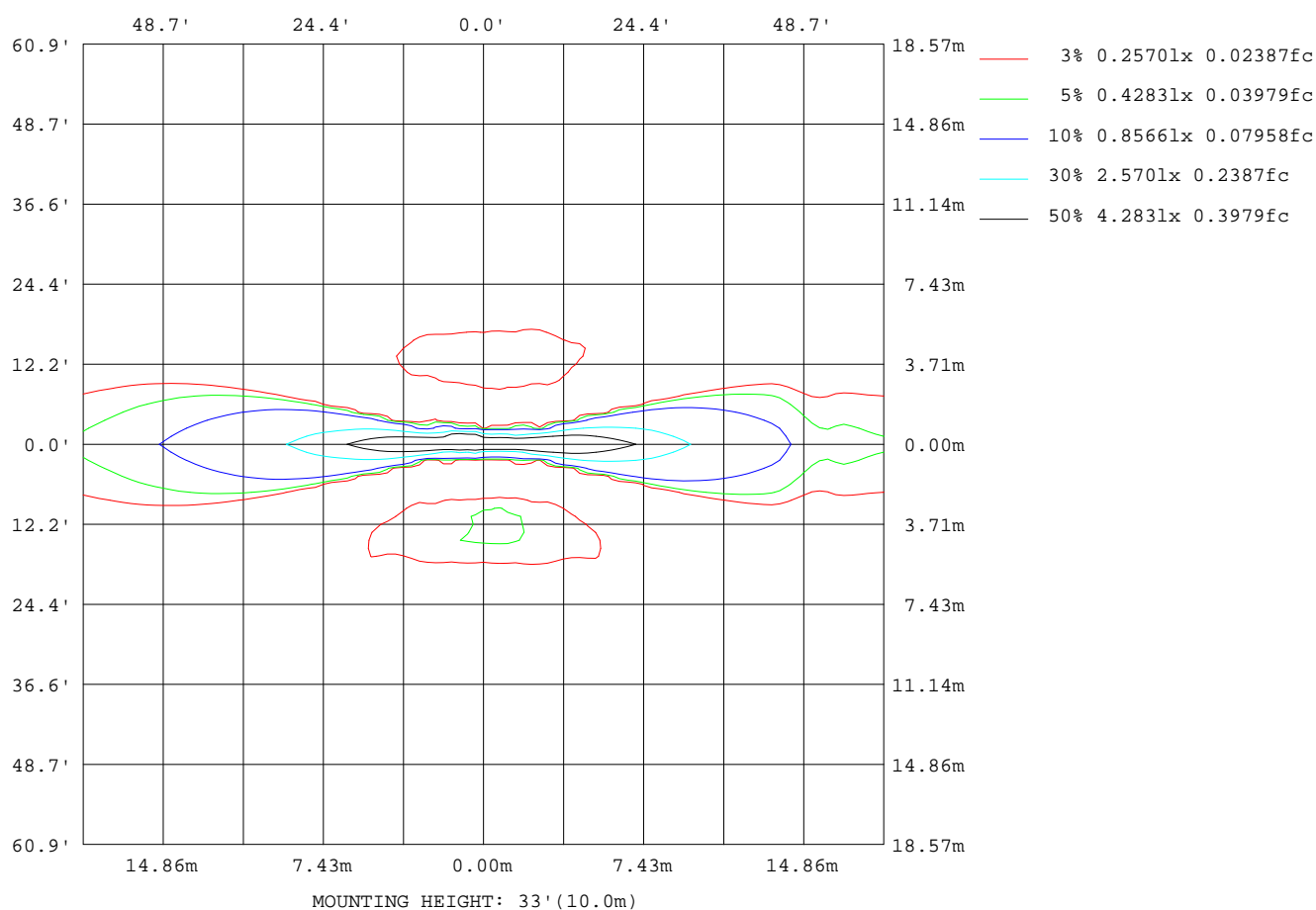
Note:The Curves indicate the illuminated area and the average illumination when the luminaire is at different distance.

C Range: 0 - 360DEG  
C Interval: 15.0DEG  
Test Speed: HIGH  
Temperature:25.3DEG  
Operators:Jason  
Test Date:2020-06-09

γ Range: 0 - 90DEG  
γ Interval: 1.0DEG  
Test System:EVERFINE GO-2000B\_V1 SYSTEM V2.0.362  
Humidity:58%  
Test Distance:5.850m [K=1.0000]  
Remarks:

ISOLUX DIAGRAM

Test:U:220.9V I:0.0516A P:5.895W PF:0.5172 Freq:60.07Hz Lamp Flux:338.785x1 lm		
NAME: St.Tropez-830-3	TYPE:Linear Light	SERIAL No.:
SPEC.:3000K	DIM.: L140mm*W95mm*H62mm	
MFR.: NEKO LIGHTING AG		



C Range: 0 - 360DEG  
C Interval: 15.0DEG  
Test Speed: HIGH  
Temperature:25.3DEG  
Operators:Jason  
Test Date:2020-06-09

γ Range: 0 - 90DEG  
γ Interval: 1.0DEG  
Test System:EVERFINE GO-2000B\_V1 SYSTEM V2.0.362  
Humidity:58%  
Test Distance:5.850m [K=1.0000]  
Remarks:

### LED Avg.L Report

Test:U:220.9V I:0.0516A P:5.895W PF:0.5172 Freq:60.07Hz Lamp Flux:338.785x1 lm		
NAME: St.Tropez-830-3	TYPE:Linear Light	SERIAL No.:
SPEC.:3000K	DIM.: L140mm*W95mm*H62mm	
MFR.: NEKO LIGHTING AG		

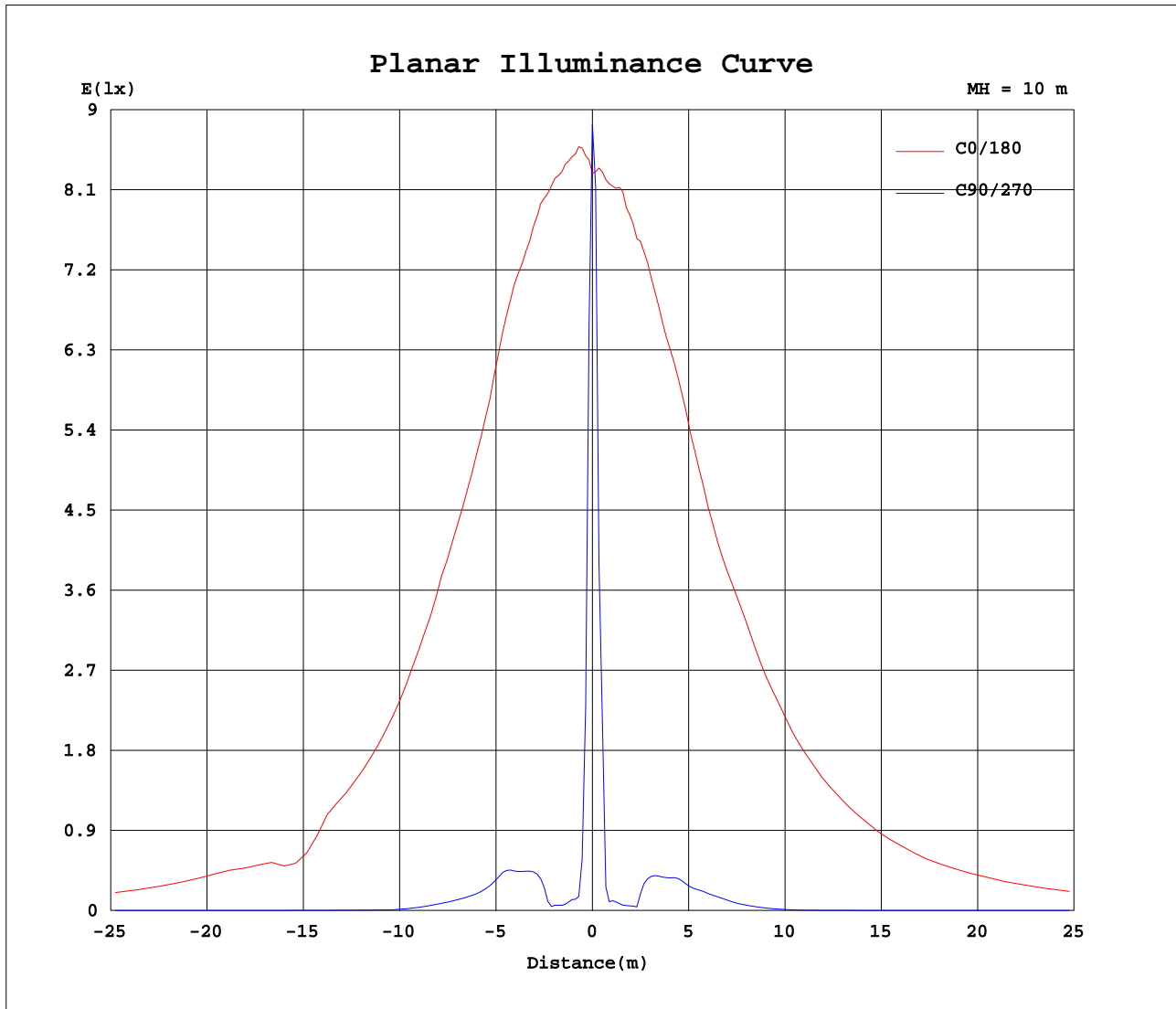
AvgL	cd/m2
L_0~180(65)av	77931
L_0~180(75)av	107524
L_0~180(85)av	116739
L_90~270(65)av	79
L_90~270(75)av	59
L_90~270(85)av	70
L_45(65)av	678
L_45(75)av	329
L_45(85)av	426

Standard: GB/T 29293-2012

C Range: 0 - 360DEG  
C Interval: 15.0DEG  
Test Speed: HIGH  
Temperature:25.3DEG  
Operators:Jason  
Test Date:2020-06-09

γ Range: 0 - 90DEG  
γ Interval: 1.0DEG  
Test System:EVERFINE GO-2000B\_V1 SYSTEM V2.0.362  
Humidity:58%  
Test Distance:5.850m [K=1.0000]  
Remarks:

## Planar Illuminance Curve



C Range: 0 - 360DEG  
C Interval: 15.0DEG  
Test Speed: HIGH  
Temperature: 25.3DEG  
Operators: Jason  
Test Date: 2020-06-09

$\gamma$  Range: 0 - 90DEG  
 $\gamma$  Interval: 1.0DEG  
Test System: EVERFINE GO-2000B\_V1 SYSTEM V2.0.362  
Humidity: 58%  
Test Distance: 5.850m [K=1.0000]  
Remarks:

```

γ Range: 0 - 90DEG
γ Interval: 1.0DEG
Test System:EVERFINE GO-2000B_V1 SYSTEM V2.0.362
Humidity:58%
Test Distance:5.850m [K=1.0000]
Remarks:

```

```

γ Range: 0 - 90DEG
γ Interval: 1.0DEG
Test System:EVERFINE GO-2000B_V1 SYSTEM V2.0.362
Humidity:58%
Test Distance:5.850m [K=1.0000]
Remarks:

```